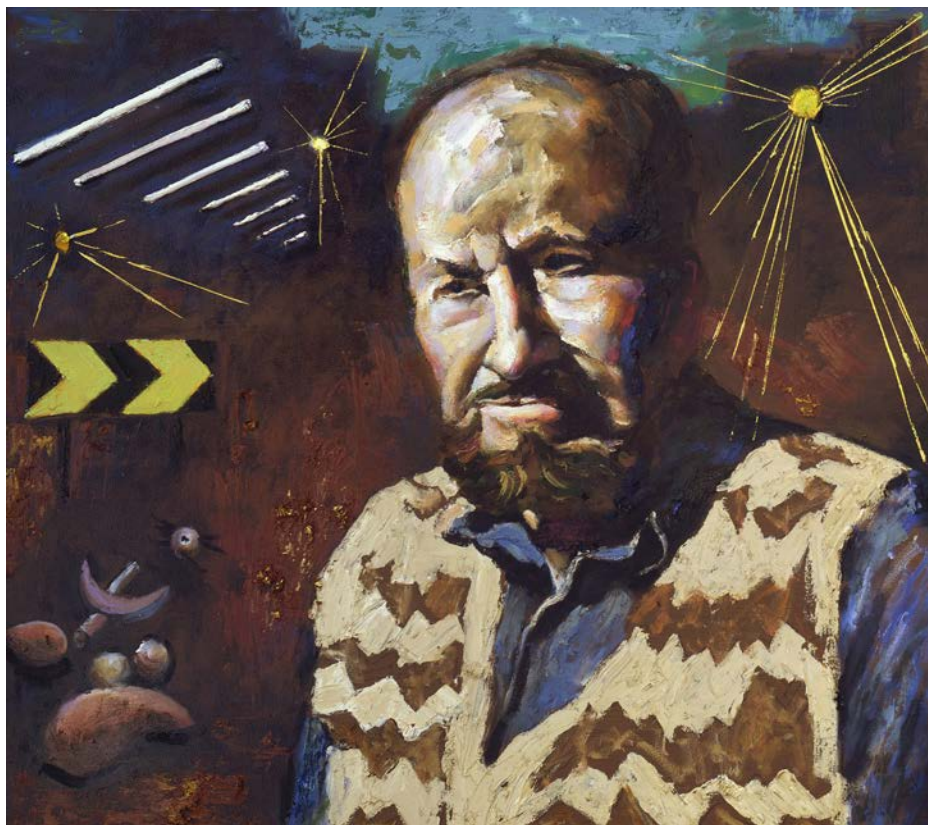


## A Life in Art: Albert Tucker

21 November 2016 to 19 March 2017  
Albert and Barbara Tucker Gallery  
Curator: Sue Cramer

**HEIDE**  
**MUSEUM**  
**OF MODERN**  
**ART**



Albert Tucker  
*Self Portrait* c. 1983  
oil on composition board  
73 x 65 cm  
On long-term loan from the Albert &  
Barbara Tucker Foundation

Featuring paintings from across his career, this exhibition traces aspects of Albert Tucker's development as one of Australia's most distinctive and important artists. Portraying human drama and allegory through his images, Tucker was often drawn to the darker aspects of existence, while also being driven by formal experimentation.

The exhibition begins with his fierce social commentaries set within 1940s wartime Melbourne, including works from his landmark series *Images of Modern Evil* (1943–48), and ends with landscapes and portraits of fellow artists painted in the final decades of his life. Several of Tucker's self-portraits made throughout his life are also displayed and these piercing images of self-observation similarly reflect his stylistic development.

Tucker left Australia for thirteen years in 1947, famously declaring himself 'a refugee from Australian culture' and seeking firsthand experience of European art. Arriving in London,

he soon made Paris his base and soaked up the atmosphere while investigating the formal and technical advancements of the artistic avant-garde. 'I am going to be a piece of blotting paper', he wrote to Sidney Nolan. Extended periods in Germany and Italy followed, bringing further artistic discoveries: Expressionism, Surrealism, and the built-up, collaged surfaces of Art Informel, the influences of which are seen here in a range of works.

In Rome, a visit from Nolan in 1953 stirred Tucker's nostalgia for Australia leading to his paintings of Australian archetypes: bushrangers, explorers, and his iconic *Antipodean Heads*, their craggy textures emblematic of the harsh Australian outback. Returning to Melbourne in 1960, Tucker felt a deeper connection to his homeland, its history and landscape which underpinned his continuing evocation of Australian myth. In the 1980s, Tucker returned to the urban themes of his early years, as seen in the final paintings of the exhibition set within the Melbourne suburb of St Kilda.

# List of works

This catalogue is arranged alphabetically by artist then chronologically. Measurements are height before width before depth.

## Albert Tucker

born 1914 Melbourne;  
died 1999 Melbourne



*Malvern Street* 1938  
oil on paperboard  
50.5 x 45.5 cm  
Gift of Barbara Tucker 2009



*Self Portrait* 1939  
oil on cardboard on composition board  
51.8 x 42.9 cm 65 x 56.5 cm (frame)  
Gift of Barbara Tucker 2008



*The Futile City* 1940  
oil on cardboard  
44.5 x 54.5 cm  
Purchased from John and Sunday Reed  
1980



*Spring in Fitzroy* 1942  
watercolour, gouache, brush and ink  
on paper  
12.2 x 17.2 cm  
Gift of Barbara Tucker 2008



*Image of Modern Evil* 1944  
pastel, pen and ink and pencil on paper  
23.3 x 15.3 cm  
Gift of Barbara Tucker 2005



*Luna Park* 1945  
oil on composition board  
53 x 81 cm  
Gift of Barbara Tucker 2005



**Albert Tucker**

born 1914 Melbourne;  
died 1999 Melbourne



*Image of Modern Evil 31* 1947  
oil on composition board  
50.5 x 37.5 cm  
Gift of Barbara Tucker 2005



*Totem* 1948  
ink and watercolour on paper  
18.2 x 14 cm  
On long-term loan from the Albert &  
Barbara Tucker Foundation



*Paris Street* 1950  
gouache, watercolour, brush and ink and  
oil on paper on cardboard  
41.7 x 50 cm  
Gift of Barbara Tucker 2005



*Untitled (Four studies)* 1950  
pencil, watercolour, crayon and gouache  
on paper  
4 parts, each 27.3 x 21.4 cm  
On long-term loan from the Albert &  
Barbara Tucker Foundation



*Woman Rue St Denis I* 1950  
synthetic polymer paint, brush and ink  
on paper  
52 x 37 cm  
On long-term loan from the Albert &  
Barbara Tucker Foundation



*Woman* 1951  
synthetic polymer paint, brush and ink,  
watercolour, gouache on paper  
49.8 x 32.3 cm  
On long-term loan from the Albert &  
Barbara Tucker Foundation

**Albert Tucker**

born 1914 Melbourne;  
died 1999 Melbourne



*Woman and Beast* 1951  
oil on board  
50.9 x 45.5 cm  
Gift of Barbara Tucker 2014



*Bus Stop* 1954  
oil on composition board  
62 x 81 cm  
Gift of the Albert and Barbara Tucker  
Foundation 2017



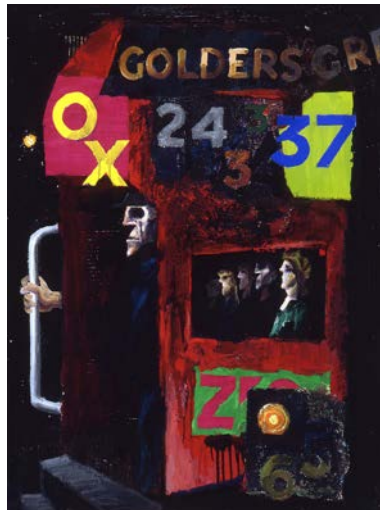
*Killing* 1954  
oil on composition board  
81 x 62 cm  
On long-term loan from the Albert &  
Barbara Tucker Foundation



*Armoured Figure* 1955  
oil on composition board  
80.5 x 63 cm  
On long-term loan from the Albert &  
Barbara Tucker Foundation



*Wounded Mountain* 1955  
oil on composition board  
66 x 131 cm  
Gift of Barbara Tucker 2008



*London Bus* 1957  
oil on composition board  
122 x 92 cm  
On long-term loan from the Albert &  
Barbara Tucker Foundation



*Cratered Head* 1958-1960  
synthetic polymer paint on composition  
board  
122 x 101 cm  
Gift of the Albert & Barbara Tucker  
Foundation 2019



*Intruder Resting* 1965-1966  
synthetic polymer paint on composition  
board  
122 x 152 cm  
On long-term loan from the Albert &  
Barbara Tucker Foundation



*Armoured Faun* 1969  
oil and PVA on composition board  
122 x 152 cm  
Gift of the Albert and Barbara Tucker  
Foundation 2016



**Albert Tucker**

born 1914 Melbourne;  
died 1999 Melbourne

---



*Image of Modern Evil* 1972  
cast bronze  
10.4 x 36 x 16.5 cm  
Gift of Dr Joseph Brown AO OBE 2005

---



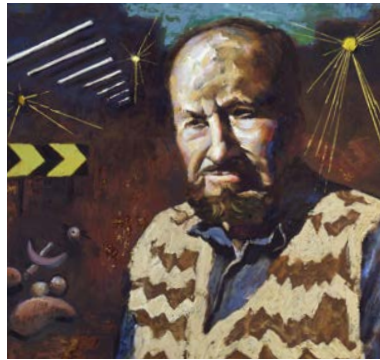
*Night Image* 1973  
oil on composition board  
56 x 71 cm  
Gift of Barbara Tucker 2005

---



*Figures on a Beach* 1978  
gouache and pastel on cardboard  
37.5 x 50.4 cm  
Bequest of John and Sunday Reed 1982

---



*Self Portrait* c. 1983  
oil on composition board  
73 x 65 cm  
On long-term loan from the Albert &  
Barbara Tucker Foundation

---



*Portrait of Joy Hester (Fitzroy Gardens)*  
1984  
oil on canvas board  
55 x 70 cm  
On long-term loan from the Albert &  
Barbara Tucker Foundation

---



*Portrait, Arthur Boyd* 1985  
oil on board  
60 x 76 cm  
On long-term loan from the Albert &  
Barbara Tucker Foundation

---



*Extinction Express* 1988  
synthetic polymer paint on composition  
board  
61 x 137 cm  
Gift of Barbara Tucker 2008

---



*At the End of My Street* 1989  
synthetic polymer paint on paper  
43.5 x 54.5 cm  
On long-term loan from the Albert &  
Barbara Tucker Foundation

---