

Learning Extension Resource

Installation Art

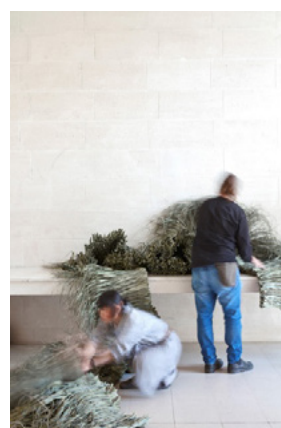
In 2019 we presented an exhibition by installation artists Wona Bae and Charlie Lawler entitled *En Route*.

Bae and Lawler explore the role of nature and its interaction with the built environment and in *En Route* they created immersive, site-specific installations in the iconic building, Heide Modern.



Wona Bae and Charlie Lawler
Rumble 2019
giclée archival pigment print
Photograph: Sean Fennessey

In their artworks Bae and Lawler challenge concepts of landscape by creating refined environments that navigate connections between people and nature. For *En Route* they experimented with botanical matter using a language of texture and reduction—by deconstructing familiar forms and casting them anew, and creating new landscapes to be considered and explored.



Wona Bae and Charlie Lawler
Contact 2019
giclée archival pigment print
Photograph: Sean Fennessey
Wona Bae and Charlie Lawler
Photograph: Sean Fennessey

Themes to explore

- What makes installation art?
 - it is usually site specific – i.e. made for a specific building or site, or it has sculptural qualities
 - it can provide an immersive experience for viewers
 - sometimes it is also interactive
 - it uses space and scale
 - it is often temporary
- How does installation art respond to space/site?
Consider architecture vs. nature.
- How might elements such as scale, form and texture be used in installation art?
- What connections are there between nature and people?
- How might artists devise new landscapes?

If you have never seen any exhibitions of installation art, check out the artists listed on the last page of this resource to see some more amazing artists who make installations from natural materials.

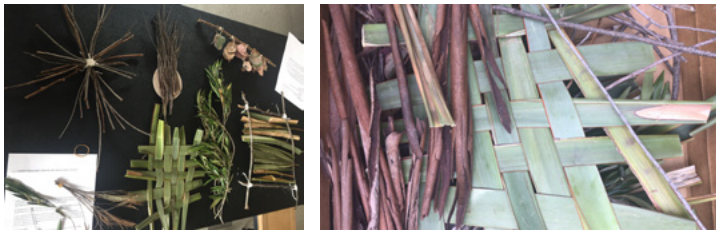
Materials & Equipment

- Found materials foraged from your garden such as, leaves, sticks, bark, seeds, stones and fallen flowers. Ask permission to take cuttings.
- Floristry or garden tie wire if you have access to it, otherwise a coat hanger, twist ties from packaging, masking tape, fishing line or string and wool are all good substitutes.
- Scissors



Activity

- Find a space you like, either inside your house, or somewhere in your outdoor environment if you have access to a garden or balcony and consider its qualities.
- What kind of installation would you like to create in this space?
 - Will it be immersive?
 - What about scale, shape and form?
 - What do you want viewers to think and feel when they engage with your work?
- Experiment with materials and construction techniques to make a variety of forms. Consider using:
 - Weaving
 - Threading
 - Twisting
 - Tying
 - Stacking
 - Arranging



Is your work designed to sit on the ground, on a pedestal or plinth, or to be suspended?



Be creative and experiment with different placements of your work in different spaces.

Invite people to view your work and ask for their responses.

Photograph your work and use the photographs for reflection and further exploration.



Undertake further research on installation artists who work with natural materials and in a variety of environmental spaces:

Andy Goldsworthy
Olafur Eliasson
Mathilda Roussel
Martin Roth
Siri Hayes
Sonja Hinrichsen
Per Kristian Nygård

Rebecca Louise Law
Michael Grab
Richard Shilling
Linda Tegg
Mikael Hansen
Patrick Dougherty
Campana Brothers